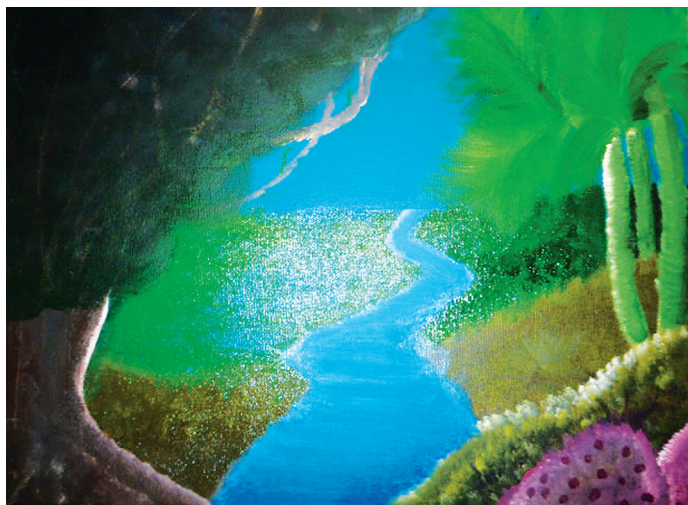


DEAR FRIEND

“You are fabulous creatures, each and every one. And I bless you: *More Life*. The Great Work begins.” These are the closing words of Prior Walter, the AIDS-afflicted prophet of God in the theatrical masterpiece *Angels in America*. He might as well be speaking to us: the staff and volunteers of Wells House Hospice as well as the many family members and friends of the terminally-ill patients we serve. Whenever a new person comes under our care, we dedicate ourselves to helping them get the most out of the time and life remaining to them rather than focus on their impending death. This is a wonderful privilege, and it is indeed “great work” for all of us at Wells House.



Today, even healthy people are living in times of grave uncertainty, with unemployment, poverty and homelessness at record levels. Devastating earthquakes, tsunamis and floods have occurred, and life-threatening diseases like cancer, Alzheimer’s, multiple sclerosis and HIV/AIDS go on without a cure. Despite such darkness, life remains a precious gift. Life’s challenges are rarely easy but we can weather them--including terminal illness--with the help of family, friends and other caring people.

Wells House Hospice Foundation helps pay for the provision of medical care and a comfortable place to call home to those most in need during one of the most difficult times of their lives. This is no small number; Wells House has to date served more than 2,300 terminally-ill patients since our founding in 1997. They include many people who are homeless and have been abandoned by their families. Some of our patients are undocumented and confused, so we can’t establish their identity in order to secure insurance for them. As a result, our foundation pays for their care. We also help provide resources and bereavement support to the children, spouses and other loved ones of Wells House’s residents.

During Prior Walter’s final monologue in *Angels in America*, he also says to the audience: “The world only spins forward. We will be citizens. The time has come.” The Great Work of Wells House Hospice Foundation continues, thanks to you. Your help as friends of Wells House in supporting our mission and spreading the word about us is greatly appreciated. We wish you all the blessings of life and love!

Painting image by one of the Wells House Hospice patients. Art therapy group, 2010.

– Chris Carpenter, Foundation Representative

OUR MISSION

Wells House Hospice Foundation, Inc. was established in 1999. The Mission is to develop fundraising and grantsmanship for programs in end-of-life/palliative care education and training; hospice care for underserved and uninsured populations and their families; and community outreach and continuing education in end-of-life/palliative care for medical, allied health and human service professionals in the Long Beach - Orange County community.

SERVICES FUNDED BY WELLS HOUSE HOSPICE FOUNDATION

- Residential Hospice & Nursing Services in Long Beach and Orange County
- Homeless Program
- Removal of Barriers to HIV/AIDS Care
- Support of Patients from Underserved and Underinsured/Uninsured Populations
- Complementary & Alternative Therapies (including art, music, massage, aromatherapy and pet therapy)
- Community Outreach & Continuing Education
- End-of-Life Education & Training



WE ARE VERY GRATEFUL TO THE FOLLOWING FOUNDATIONS, ORGANIZATIONS AND BUSINESSES FOR THEIR SUPPORT OF WELLS HOUSE HOSPICE FOUNDATION IN 2010-2011:

Long Beach Community Foundation, St. Mary Medical Center Foundation/Catholic Healthcare West, Pacific Hospital of Long Beach Charitable Trust, Josephine S. Gumbiner Foundation, Long Beach Lesbian & Gay Pride, Inc., AIDS Thrift Store, LGB2NETWORK, Hot Java, J2 Design, Hilo Clothing, Boombastic Productions, The Crypt, Cafe Ambrosia, The Pizza Place & Garden Cafe, Paradise Piano Bar.

WELLS HOUSE HOSPICE FOUNDATION, INC. 2010-2011

Executive Board of Directors

Ronald Morgan, BS - President & Executive Director
Administrator, Wells House Hospice

Patricia Schafer - Vice President - Treasurer
Educator, Long Beach Unified School District

Kelsey Schafer - Secretary
Business Student/Intern

Allen Thomas, JD - General Counsel
Attorney, Legal Practice

General Board

Debbie Ball
President, Care Access

Dale O'Neal, PhD
O'Neal Psychotherapy

Mary Tran, D.O.
Director, Palliative Care
Private Medical Practice

Honorary Board

Donald Foltz
State of California Legislative Assistant (deceased)

AUDITED FINANCIAL STATEMENT

INCOME

Governmental Grants
78% - \$97,882

Corporate Grants
16% - \$20,000

Private Donations
5% - \$6,538

Fundraising Events
1% - \$1,670

Total Income
\$126,090

EXPENSES

Programs*
88% - \$119,587

Administration
7% - \$10,051

Fundraising
5% - \$6,245

*Programs Include:
Underserved population support, Complementary and Alternative Therapy, End-of-Life Education & Community Outreach.

Total Expenses
\$136,063